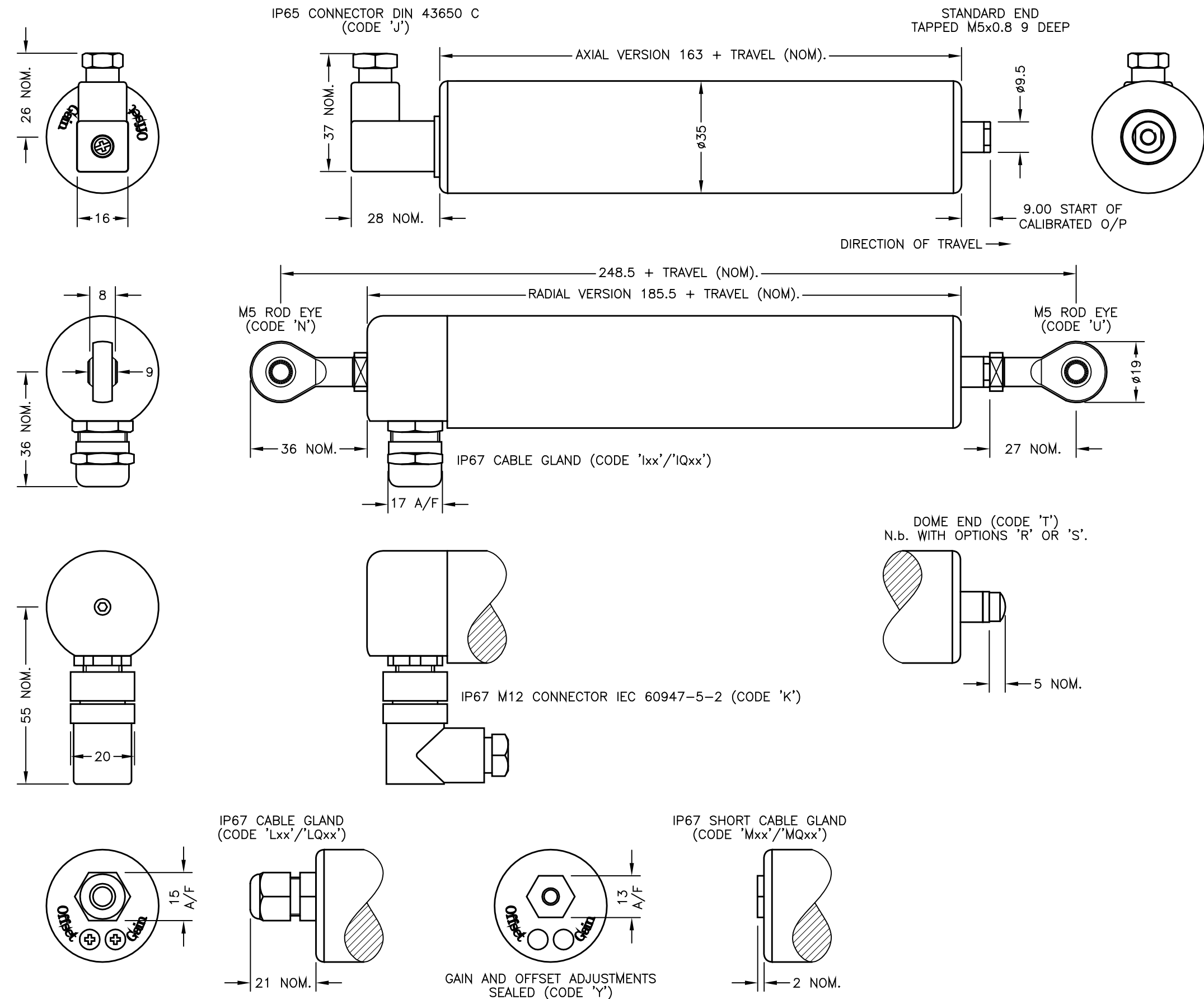


N.b. ROD-EYE ORIENTATION NOT GUARANTEED.



ELECTRICAL OPTIONS/ SPECIFICATIONS

<u>OUTPUT</u>	<u>SUPPLY</u>
0.5 TO 4.5V RATIO METRIC	5V
SUPPLY CURRENT 12mA TYP.	20mA MAX.

CABLE: 0.2mm², 0/A SCREEN, PUR JACKET – SUPPLIED
WITH 50cm OR REQUIRED LENGTH IN cm (15000cm MAX).
STANDARD 3-CORE: JACKET Ø4mm BLACK e.g. 'L50'
OPTIONAL 5-CORE: JACKET Ø4.6mm BLUE e.g. 'LQ50'

CABLE/CONNECTOR*		CONNECTIONS;	
3 CORE	5 CORE	CONNECTOR	
RED	RED	:1	+Ve
—	ORG	:1	+SENSE (5-WIRE ONLY)
BLACK	BLACK	:3	0V
—	GRY	:3	—SENSE (5-WIRE ONLY)
WHITE	WHITE	:2	OUTPUT
SCREEN	SCREEN	:4	BODY

*CONNECTORS; MAXIMUM CONDUCTOR CROSS SECTION 0.75mm²

RANGE OF DISPLACEMENT FROM 5mm TO 800mm,
IN INCREMENTS OF 1mm.

BODY MATERIAL: STAINLESS STEEL.

FURTHER OPTIONS:

SINGLE PAIR OF BODY CLAMPS 'P'

TWO PAIRS OF BODY CLAMPS 'P2'
 SPRING RETURN PUSH ROD FRAME

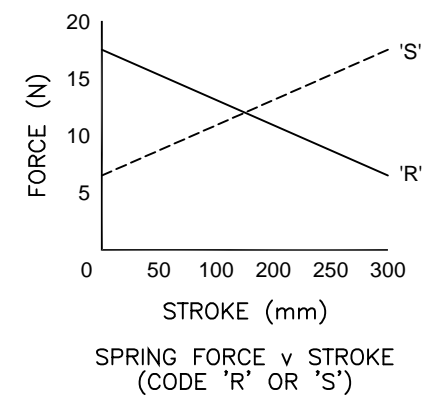
SPRING RETURN PUSH-ROD, TRAVEL $\leq 300\text{mm}$
RETURN TO EXTENDED POSITION (CODE 'R')

RETURN TO RETRACTED POSITION (CODE 'S')

PUSH-ROD FREE (CODE 'V') - NOT AVAILABLE

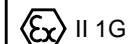
SPRUNG OPTIONS.

GAIN AND OFFSET ADJUSTMENTS NOT AVAILABLE WITH
RADIAL BODY, CODE 'lxx' AND 'K', OPTIONS.



NOTE:- READ INSTALLATION SHEET X101-19
FOR FULL INSTRUCTIONS FOR USE.

ATEX / IECEx APPROVED TO



Ex ia IIC T4 Ga (Ta= -40° to +80°C)

Ui 11.4V, li 0.2A, Pi 0.51W

APPROVED FOR USE IN CONJUNCTION
WITH A GALVANICALLY ISOLATED BARRIER.

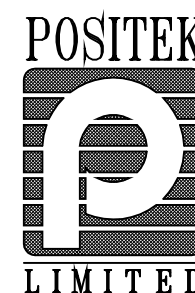
NOTE: APPROVAL ONLY APPLIES AT NORMAL
ATMOSPHERIC PRESSURE!

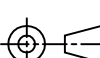
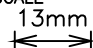
N	OPTIONS 'R' & 'S' OVER TRAVEL DIMS MODIFIED - RAN1030.	PDM
O	RANGE WAS 50-600mm RAN1056	RDS
P	5-CORE OPTION ADDED ~ RAN1102	PDM

THE PUSH-ROD RETRACTS A FURTHER 4mm NOM. FROM START OF CALIBRATED TRAVEL. STANDARD VERSIONS THE PUSH-ROD EXTENDS A FURTHER 8mm NOM. FROM END OF CALIBRATED TRAVEL, FOR SPRUNG VERSIONS: 'R': 1mm, 'S': 2mm. 'V' CODED PUSH-ROD WILL DEPART SENSOR BODY.

DRAWINGS NOT TO BE CHANGED WITHOUT REFERENCE TO THE CHANGE PROCEDURE.
CHANGES TO PARTS USED IN INTRINSICALLY SAFE PRODUCT MUST BE APPROVED
BY THE AUTHORISED PERSON
THIS IS AN UNCONTROLLED PRINT AND WILL NOT BE UPDATED.

Herbertek www.herbertek.se
info@herbertek.se
 +46-18 590510



N	27/07/15		CHECKED BY	X	±0.4
O	9/11/15		PDM	X.X	±0.2
P	10/04/17			X.XX	±0.1
		<p>DESCRIPTION</p> <p>X101 INTRINSICALLY SAFE</p> <p>STAND ALONE LINEAR</p> <p>POSITION SENSOR</p>			
<p>SCALE</p> <p>13mm</p> 		<p>DRAWING</p> <p>NUMBER</p>	<p>X101-11</p>		<p>REV</p> <p>P</p>
			<p>SHEET 1 OF 1</p>		